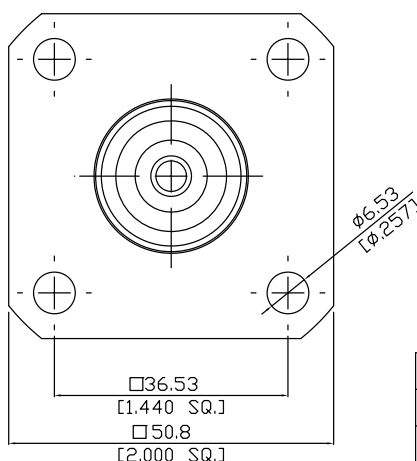
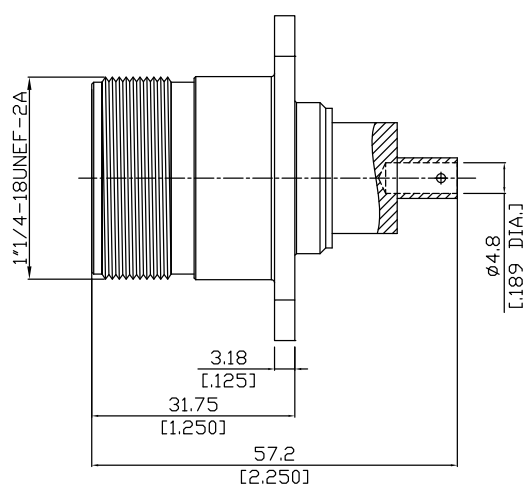
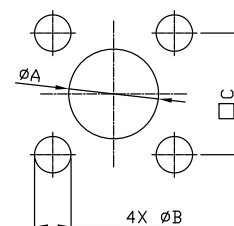


LC Female Connector Solder Attachment 4 Hole Flange
Mount Drilling Terminal, 1.44 inch Hole Spacing

LC2GFF50-5720A / 83



Mounting Dimensions



	mm		inch	
	Max.	Min.	Max.	Min.
A	24.23	24.18	0.953	0.951
B	6.73	6.63	0.264	0.261
C	36.58	36.48	1.4401	1.436

All dimensions are in mm [inch]

Tolerances according to DIN ISO 2768-mH

Interface

According to

MIL-STD-348B/315

Electrical Data

Impedance

50 Ω

Frequency

DC to 1 GHz

Insulation Resistance

≥ 5 GΩ

Operating Voltage(DC)

5000 V dc

Dielectric Withstanding voltage

5000 V rms

Material And Plating

Piece Parts	Material	Plating
Centre contact	Beryllium Copper	Silver
Body	Brass	Nickel
Insulator	PTFE	

Mechanical Data

Coupling mechanisms

Screw-lock

Mating Cycles

≥ 500

Centre Contact

Soldered

Terminal Type

Drilling

Environmental Data

Temperature Range

-65°C to +165°C

RoHS

compliant

Packing

Single or 100